



WALKING BEAM CONTROLS

Which would you choose?



WALKING BEAM CONTROLS

- Traditional walking beams have been driven by Hydraulics.
- Walking beams are used in food plant staging coolers mainly for pork and beef facilities.
- Let's briefly explore the differences between a hydraulic walking beam system and an electric walking beam system.



Why Hydraulic

Hydraulic Pros

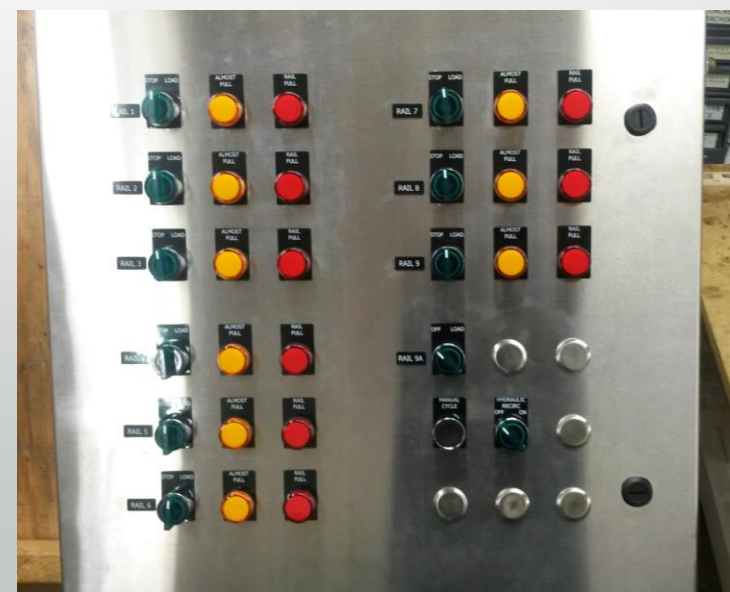
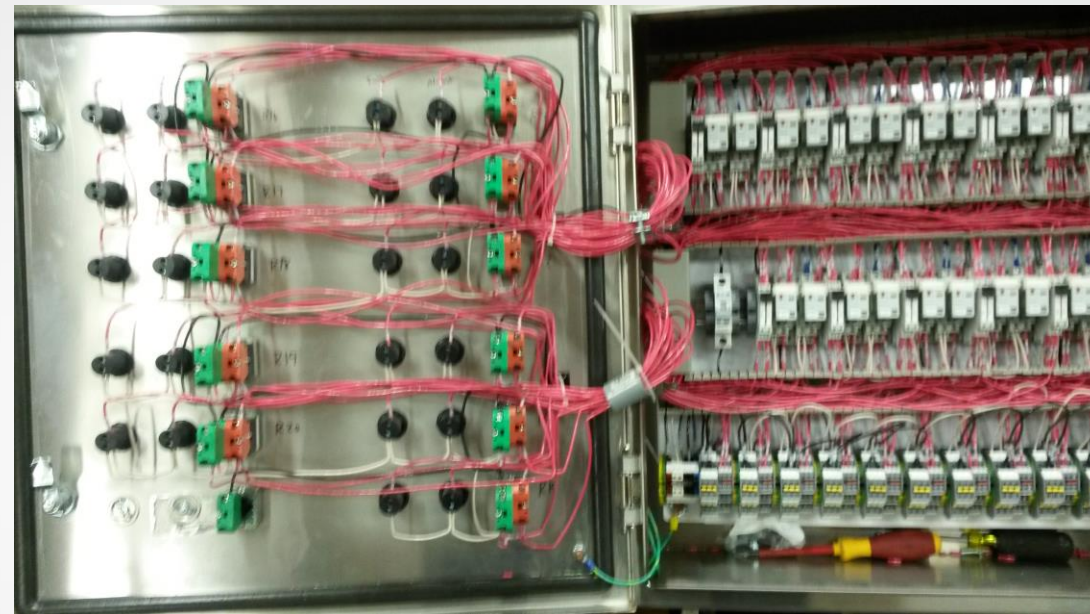
- 1 central power unit can control multiple walking beams
- Robust and durable
- Proven technology
- Lower individual component cost
- More widely known

Electrical Cons

- More susceptible to mechanical binding and misalignment
- Higher individual component cost
- Requires more specific knowledge for maintenance



Hydraulic Controls





Why Electric

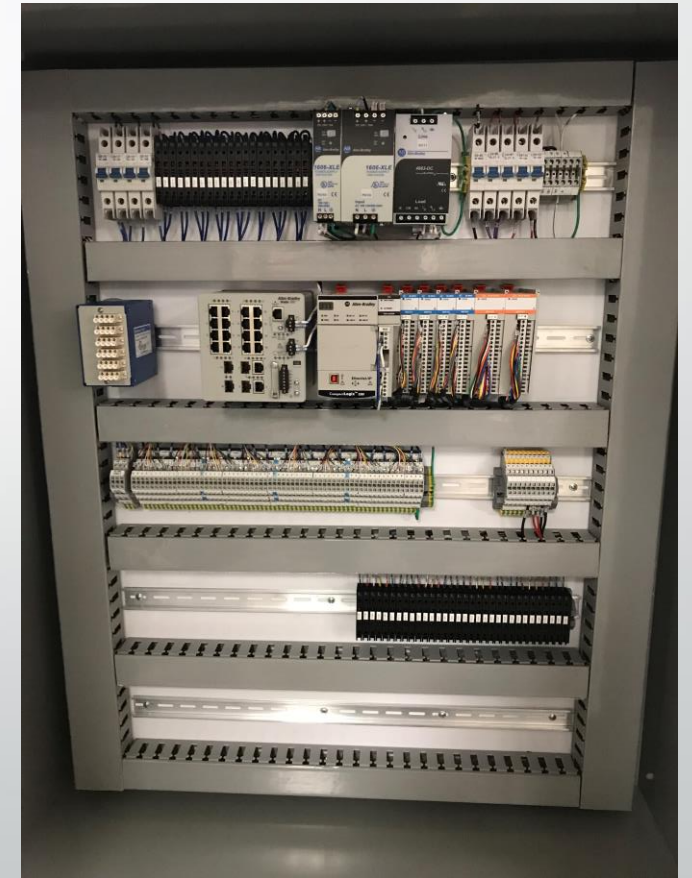
Hydraulic Cons

- Hydraulic fluid leaks over food
- Erratic cylinder speeds in cold environment
- Violent cylinder actuation if not adjusted correctly
- Power unit runs even if walking beams are not in use
- More expensive to run over time
- Doesn't stop until something is broken

Electrical Pros

- No fluid to leak over food
- Capable of fine-tuning speeds, force, accel and decel
- Constant speed in any environment
- Capable of data logging maintenance schedules based on use
- More energy efficient to run over time
- Capable of halting actuation before things break
- Longer life cycle when properly maintained
- Smooth actuation
- Tamper resistant controls

Electric Controls



Can you see the value?

Traditional Hydraulic Walking
Beam



Servo Driven Electric Walking
Beam

